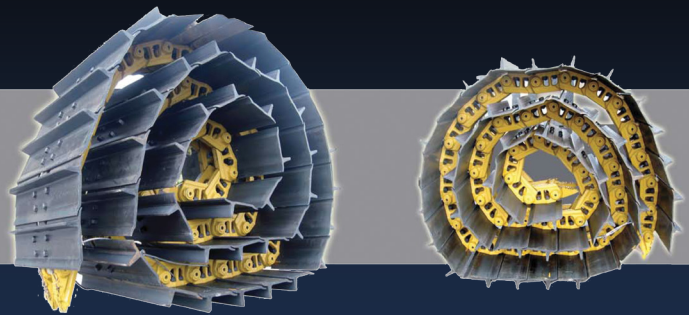


## Link Assemblies



Track Group Assemblies



Pin&Bushings



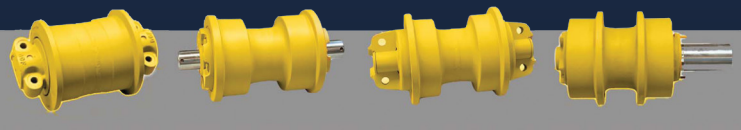
Shoes



Links

Lubricated Chains / Split Master Links

## Rollers, Segment, idlers, Sprockets



Track Rollers



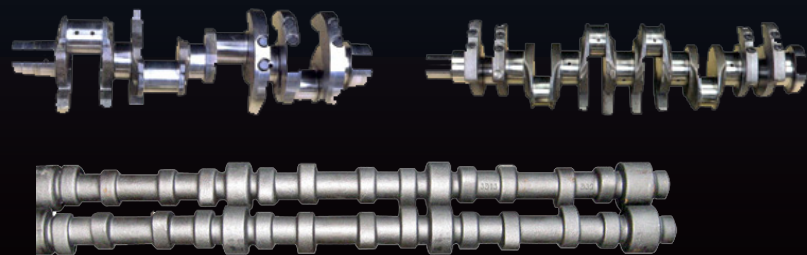
Upper Rollers

Segments

Idler Groups

Sprockets

## Crankshaft



## N. America Distribution Warehouses



### TREK Branch

- |                                      |  |
|--------------------------------------|--|
| ① Michigan Branch<br>(800)444-8735   | ⑥ Texas Branch<br>(800)933-4415            |
| ② New Jersey Branch<br>(800)945-1890 | ⑦ California Branch<br>(800)685-0668       |
| ③ Minnesota Branch<br>(800)753-8032  | ⑧ Alberta Branch<br>(800)661-8809          |
| ④ Georgia Branch<br>(800)766-8949    | ⑨ British Columbia Branch<br>(800)663-0022 |
| ⑤ Oregon Branch<br>(800)374-8551     | ⑩ Quebec Branch<br>(800)361-7154           |

**THE NAME THAT  
MEANS QUALITY**



*The Trusted Leader since 1957*

[www.trekdirect.com](http://www.trekdirect.com)

[sales@trekdirect.com](mailto:sales@trekdirect.com)





**Main factory in Gimhae, South Korea**  
*Additional factories in Gimhae (2 locations), Miryang, South Korea.*



**Quality Parts**

- DCF has over 100 years of combined experience of producing for OEM companies, such as Volvo, Hyundai, Doosan, Caterpillar, JCB, and many more.
- Continuously investing in R&D has resulted in decreased production costs, increased manufacturing capacity and better quality control measures. State of the art manufacturing automation allows more flexibility in production capacity enabling 24 hour a day production all year round.

**Why choose TREK**

**Quality People**

- TREK’s sales personnel average over 20 years of experience, bringing the best customer service in this industry
- Their knowledge and know-how is TREK’s greatest asset

**Warranty**

- TREK offers the best warranty in the industry by offering its own extended warranty on top of the manufacturer’s warranty
- TREK strives for and stands 100% behind its quality products through intensive R&D investment

**Production Capacity** (per month)

- Track link assemblies
- Sprocket Segment
- Idlers
- Rollers
- Track Shoes
- Pin and Bushing Groups all models
- Crankshafts available

[www.trekdirect.com](http://www.trekdirect.com)

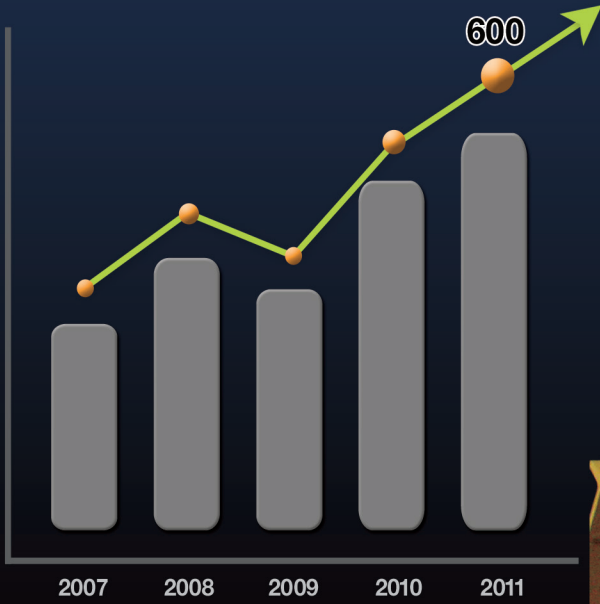
**Quality Control**

ISO 14001:2002    ISO 9001:2002  
ISO/TS1649:2002    KSA 9001:2001

- 18,000 PCS
- 30,000 PCS
- 3,000 PCS
- 30,000PCS
- 4,500 Ton

[sales@trekdirect.com](mailto:sales@trekdirect.com)

**Sales**



(unit: US million dollars)  
Note : DCF Group sales

